



Energy data in real-time

PowerRadar offers you a single view into your energy strategy. It displays your Energy Insights from device to site to corporate level, with data provided by Panoramic Power sensors that capture device-level energy usage data. PowerRadar is an is easy to use web platform offering real-time visibility into energy consumption, peaks an anomalies. It can be accessed from your PC, tablet or mobile device via our app.

The dashboard

The dashboard provides a detailed snapshot of the energy consumption at a single or multiple sites. The dashboard displays the total historical, current and projected energy consumption over the entire monitored sites. It also provides managers with a quick-glance view of energy consumption breakdown and provides energy and facility managers with detailed energy and operational information.

Performance

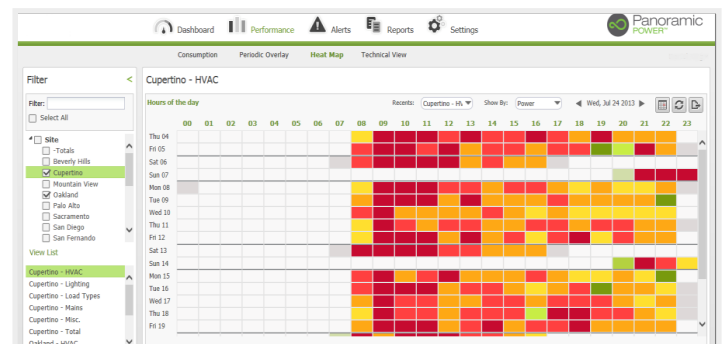
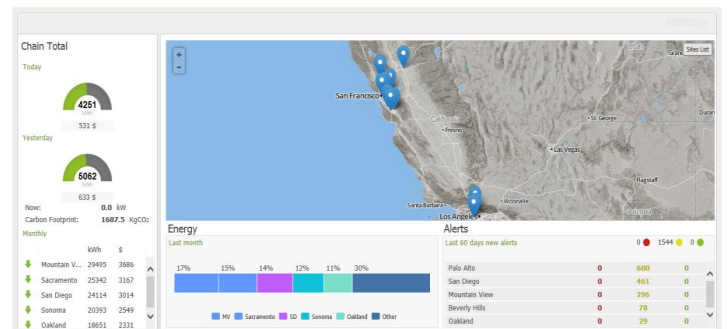
The performance screens display consumption data and provide drill down tools to focus on particular circuits during a designated period, allowing users to pinpoint energy waste and consumption or equipment irregularities. Data can be also easily be exported to 3rd party systems or fed directly through the open API.

Consumption

Allow users to view consumption data per specific site and specific circuits over time and correlate it with ambient or outside temperature.

Heat map

Display energy usage as a heat intensity map, enhancing user's abilities to instantly detect exceptional energy consumption.



Key features

- Detect inefficiencies and waste through unmatched energy visibility
- Identify operations and maintenance issues before problems occur
- Reduce energy consumption and increase savings
- Promote and enable behavioral and cultural change toward senergy efficiency



Data normalisation

Normalise energy consumption by weather and other site specific parameters to compare efficiencies between sites and systems, as well as by the Centrica Business Solutions Index and other industry standards.

Rules and alerts

With PowerRadar, users can easily create sophisticated, rules-based events and alerts triggered by energy pattern, status and threshold to automate and improve everyday processes. Multiple types of predefined alerts can be triggered when a threshold, or a combination of threshold and temperature, is met. Alerts can be sent to customers via SMS, email or HTTP post notifications.

Reports

Users can query, export, automate and print built-in reports, detailing single and multiple sites' energy consumption and alert history. Reports can be saved or emailed on a predefined schedule to users across the organisation. The reports allow users to intelligently take action and reduce energy and operational waste.

Management tools

Easily populate and store intelligence about physical locations, electrical hierarchy, operation scheduling and more. The tool includes a role-based access control model for securing permissions.

Enterprise grade platform

The application is designed to support hundreds of thousands of sensors and circuits and manage thousands of distributed sites through a modular and scalable architecture hosted in the cloud.

Interoperability

Open API and out-of-the-box adapters enable integration with third-party applications such as BMS, billing systems and controllers. Data can also be imported from smart meters and other environmental sensors.



Best-in-class web app for unmatched visibility into your energy performance through device-level energy analytics

